

Indian Meal Moth

Indian Meal moth

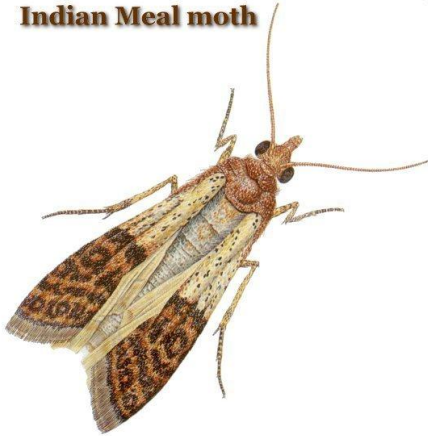


Photo courtesy of Alivanti



larva or worm stage

Indian Meal moths develop in many kinds of stored foods. Coarsely ground grains and cereal products are commonly infested. They are also found in herbs, dried fruits, nuts, dried pet foods, flaked fish food and bird seed. They can also breed in ornamental items made of dried flowers and seeds.

They are sometimes mistaken as clothes moths when homeowners first notice small moths flying in a zigzag fashion around rooms in the home. They fly mostly at night and are attracted to lights. Occasionally the larva (worms with black heads) crawl up walls. Other times the larvae are found in food packages along with the webbing and cast skins.

The first and most critical step in control is to identify all sources of infestation. The presence of webbing is one sure sign. Infested material should be thrown away. Thoroughly clean areas where product was stored to pick up all spillage. The thoroughness of cleaning is important to eliminate food the surviving insects can feed on.

To avoid future infestations examine foods carefully before purchasing cereal products and related. Check the packaging date and buy only what can be consumed in a reasonable amount of time. Keep products stored in tight containers and pick up spillage.

Adult moths can be easily killed with a household aerosol for flying insects. Read the label before using. Pheromone traps can also be used to monitor for the presence of adult moths, particularly in commercial locations.



Paratex Pest Solutions

1-800-GOT BUGS?

(800 542 1234)

SOLUTIONS