

**FOOD STORAGE PESTS**  
**Beetles, Weevils, Moths**



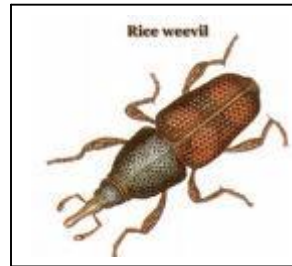
Moth Larva

Food Storage Pests - There are numerous insects that fall into this category. Most are beetles and moths. A weevil is simply a beetle with a long snout. All have four life stages – egg, larva, pupa (or cocoon) and adult. Like a caterpillar forms a cocoon before it turns into a butterfly, a flour moth forms a cocoon before it turns into a moth. Likewise, a beetle larva turns into an adult beetle. Adults are easy to identify. Larva are more complicated. You may find only adults, only larvae, or both infesting your home or business.

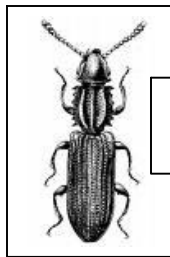
There are many names in this group; including rice weevil, granary weevil, angoumois grain moth, drugstore beetle, cigarette beetle, Indian meal moth, confused flour beetle, saw-toothed grain beetle, Mediterranean flour moth, red flour beetle, and more.



Almond Moth



Rice Weevil



Saw-Toothed Grain Beetles



Indian Meal Moth

Eggs of either moths or beetles may hatch inside packages if they become old at a warm temperature. Larva may crawl into other products or the adults may crawl or fly to other areas. Once insects are present in drawers and cracks they will infest new product. Many types of food products may be infested; cereal products, flour, cornmeal, spices, dry pet food, nuts and related. **The first step in control is always to find and eliminate the source.** This means opening all potentially infested packages. Secondly, clean the spillage from all drawers and cracks. People often underestimate the thoroughness needed in these two steps. You may have to repeat it a number of times before all insects are eliminated. Adult moths are easily killed with a household aerosol labeled for flying insects. Be sure to follow label directions. Adult beetles are more difficult. Remember to only buy quantities of rice, cereal products, spices and related that can be used up in a reasonable time. Avoid storing them long periods and keep any spillage cleaned up.



**Paratex Pest Solutions**

**1-800-GOT BUGS?**

(800 542 1234)

**SOLUTIONS**