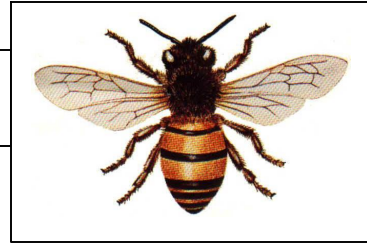


## Honey Bees



**Differences in Bees and Wasps:** Wasps are thinner, can be aggressive and interested in food and garbage. Bees are generally plumper, mild mannered and interested in flowers, not your lunch or garbage can. Honeybees sting once and then die, so they are reluctant to sting you. Wasps can sting over and over again.

**Bee Facts:** The honey bee is a social insect that can survive only as a member of a colony. A colony consists of three structurally different forms – the queen (or reproductive female), the worker (or non-reproductive female) and the drone (male). The queen is the only sexually productive female in the colony and the mother of all drones, workers and future queens. The worker bees are the most numerous in the colony and a healthy colony may contain as many as 80,000 worker bees at its peak. Workers build and maintain the nest. They leave the hive to gather nectar and convert the nectar to honey. They also protect the nest with their stings. Drones can not sting, they're defenseless and have one function, to mate with new queens. After mating a drone dies.

Bees are important because they pollinate approximately 130 agricultural crops in the US, including fruit, fiber, nuts and vegetables. The average per capita honey consumption in the US is 1.3 pounds. Foragers must collect nectar from about 2 million flowers to make one pound of honey. The average forager makes only 1/12<sup>th</sup> of a teaspoon on honey in her lifetime.

**Honey Bee Swarms:** Honey bees are valuable and provide tremendous benefits, specifically pollination, honey and wax. Swarming is a natural part of the development of a bee colony, a method of propagation that occurs in response to crowding within the colony. A swarm may contain several hundred to several thousand worker bees, a few drones and one queen. Bee swarms are not highly dangerous under most circumstances. **PROTECT OUR BEES.** [Click on this link to find a beekeeper in your area who may be willing to gather the swarm and help relocate it. \(www.wasba.org/swarm.htm\)](http://www.wasba.org/swarm.htm)

Will this link be a click-on?

Remember, honey bees are beneficial insects and are not aggressive. They will, however, defend their nest if they perceive a threat.



**For further information on Northwest  
Pests Call PARATEX – 1-800-GOT BUGS?**

(800 542 1234)

**SOLUTIONS**