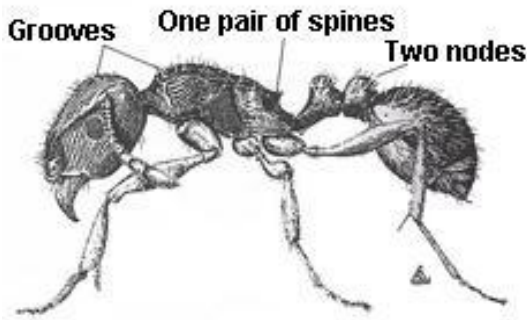




Pavement Ant

(*tetramorium caespitum*)



The pavement ant is a small, brown to black ant that is a common nuisance in the Pacific Northwest. Nests can be found in exposed soil under stones or pavement, in rotting wood, and sometimes in homes and businesses. Inside they are often found in wall voids and beneath toilets and water heaters.

Each colony contains thousands of workers and has multiple queens. The ant beds usually appear as piles of misplaced soil with a slight crater appearance. In many cases the loose soil can be seen along expansion joints and sidewalks. Ant trails may be found along edges of carpeting and baseboards. They are also found in false ceilings and attic insulation.

Pavement ants will feed on many things, including live and dead insects, honeydew of aphids and seeds. They will also feed on household food, such as meats, grease, nuts, chips, cheese, bread and honey.

Tips for controlling pavement ants include:

sealing cracks and holes around the foundation

keeping vegetation cut away from foundation

keeping layers of mulch in landscape beds no more than two inches thick and pulled back from the foundation

keeping food in sealed containers in the kitchen

Paratex Pest Solutions

Call 1-800-GOT BUGS?

(800 542 1234)



SOLUTIONS