



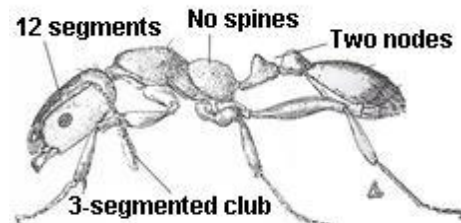
**Pharaoh Ants**  
(*monomorium pharaonis*)

Pharaoh Ants are small, yellow ants about 1/16<sup>th</sup> of an inch long. They are often found in apartments and commercial buildings such as hotels and hospitals. It does not survive well in the cold outside so it prefers heated buildings. They do not build mounds or carve galleries in wood. They nest in any dark void in a structure. Nest locations include wall voids, cabinet voids, inside hollow curtain and shower rods, boxes and expansion joints in slabs. The colony can grow enough to contain 300,000 workers and queens.

Part of the success and persistence of this ant relates to the budding and splitting habits of colonies. Numerous colonies are produced from the mother colony when a queen and a few workers break off and establish a new colony. This ant has the ability to survive most insecticide treatments and to establish colonies throughout a building.

Pharaoh ant elimination is best accomplished through an extensive indoor baiting program. By attempting to kill ants with a spray many workers become stressed and split into two or more new colonies. It may take several months to eliminate an infestation in a commercial building. This is a job for a professional.

Baiting treatments for pharaoh ants must be very thorough and complete at all nesting sites, as well as the foraging areas. It should include walls, ceilings, floor voids and electrical wall outlets. Control in a multifamily or office building requires treatment of the entire building. Baiting must be combined with exclusion and sanitary practices.



You will need magnification in order to properly identify this ant. Identification is important as conventional ant treatment methods (sprays and dusts) will often make the infestation worse.



**Paratex Pest Solutions**

**1-800-GOT BUGS?**

(800 542 1234)

**SOLUTIONS**